



***Know What You're Getting Into.***

# **TECHNICAL SERVICES DOCUMENT**

## **Pressure Test Kit Data Program Instructions**

**(Revision 12/2023)**

**This document explains how to install and use the Pressure Test Kit Data Program.**

**Important Note:** If you are using this program to save testing data, be sure to read the user guide, and download testing information before powering the unit off.

### **Disclaimer**

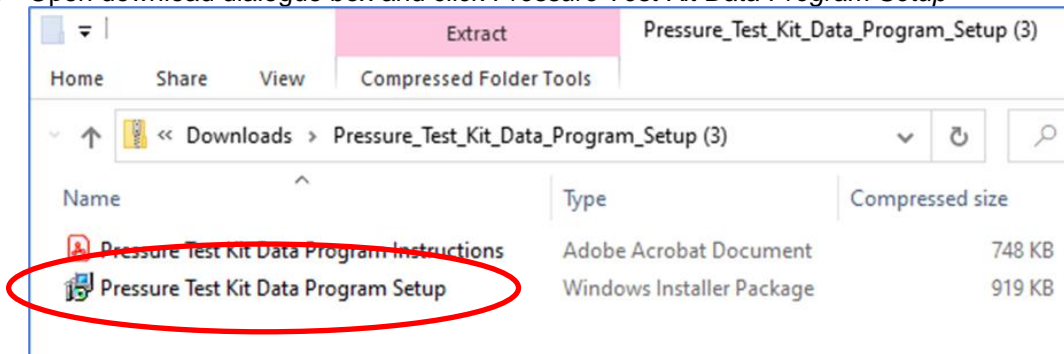
The information contained in this software application is for general information purposes only. The information is provided by Kappler Inc. and while we endeavor to keep the information up to date and correct, we make no representations or warranties of any kind, express or implied, about the completeness, accuracy, reliability, suitability or availability with respect to the software application or the information, products, services, or related graphics contained on the software application for any purpose. Any reliance you place on such information is therefore strictly at your own risk.

In no event will Kappler Inc. be liable for any loss or damage including without limitation, indirect or consequential loss or damage, or any loss or damage whatsoever arising from loss of data or profits arising out of, or in connection with, the use of this software application.

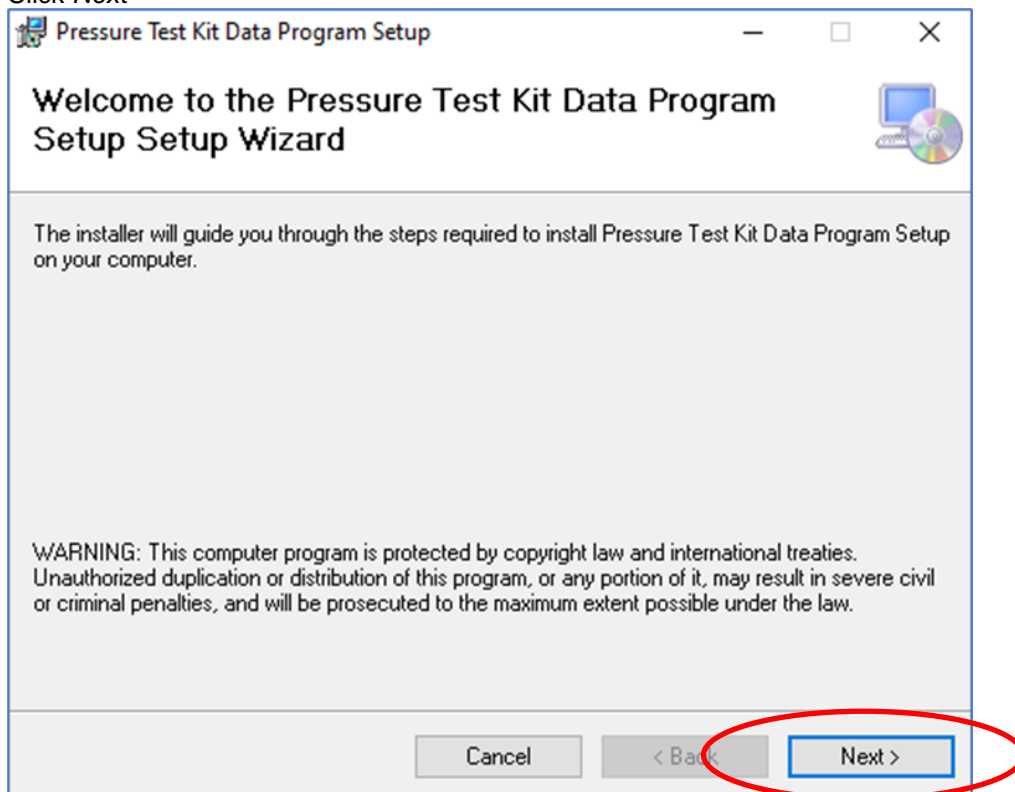
# TECHNICAL SERVICES DOCUMENT

## Installing the Pressure Test Kit Data Program Application

1. Open download dialogue box and click *Pressure Test Kit Data Program Setup*

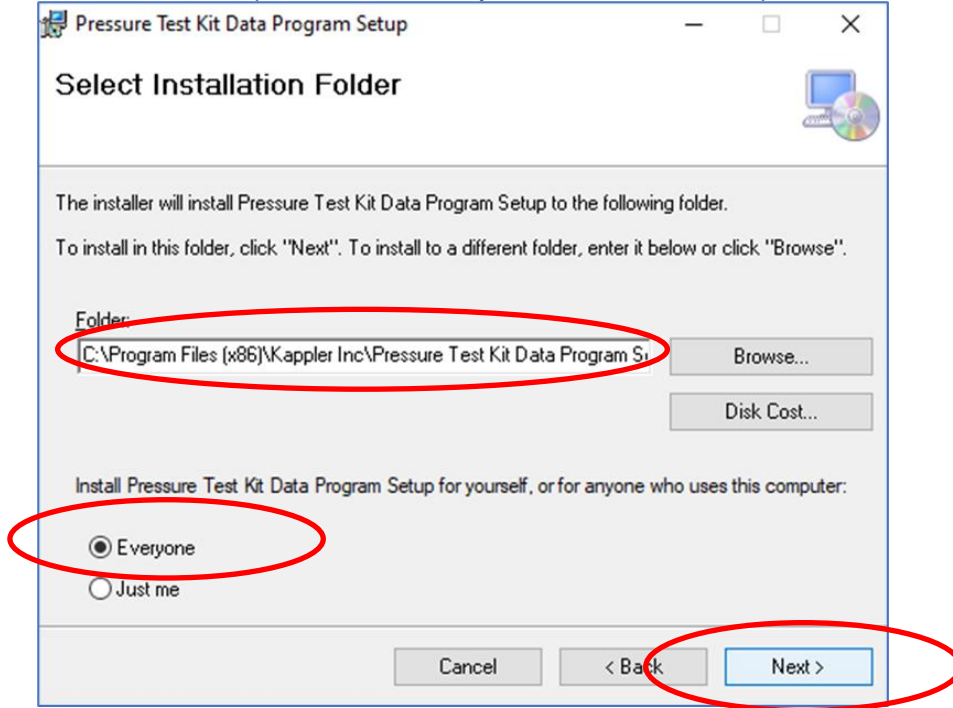


2. Click *Next*

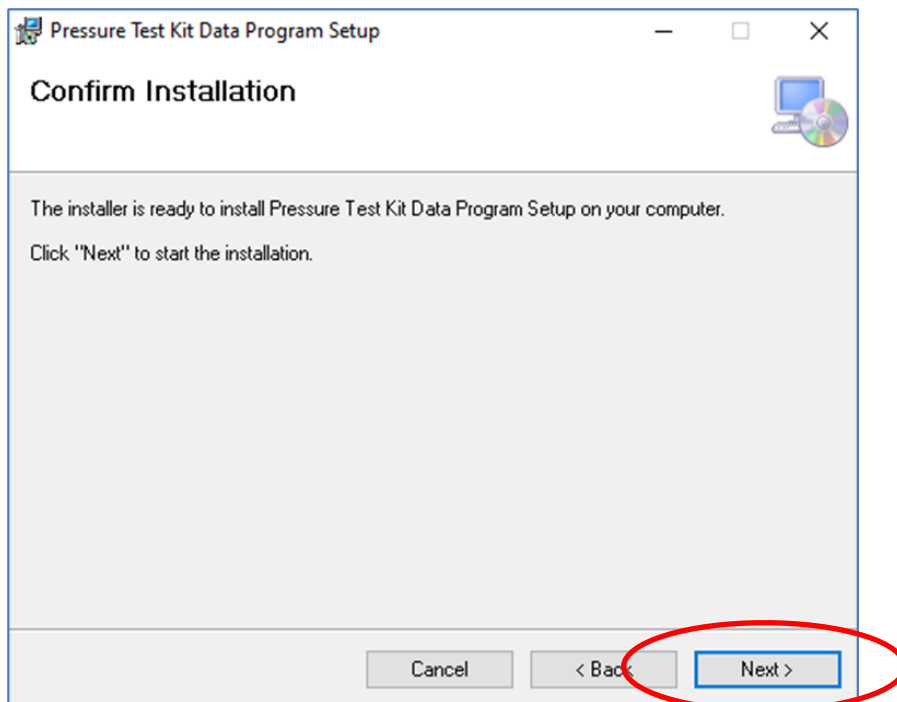


## TECHNICAL SERVICES DOCUMENT

3. Select destination path, click the *Everyone* radio button, then press *Next*

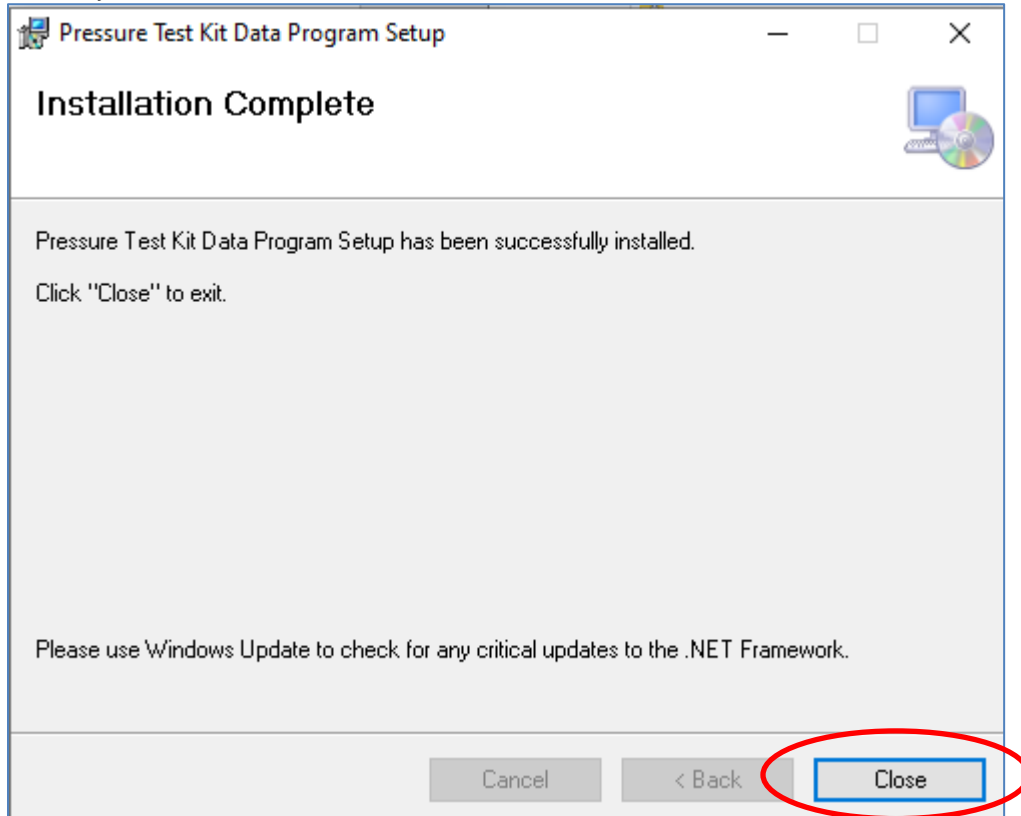


4. Click Next



## TECHNICAL SERVICES DOCUMENT

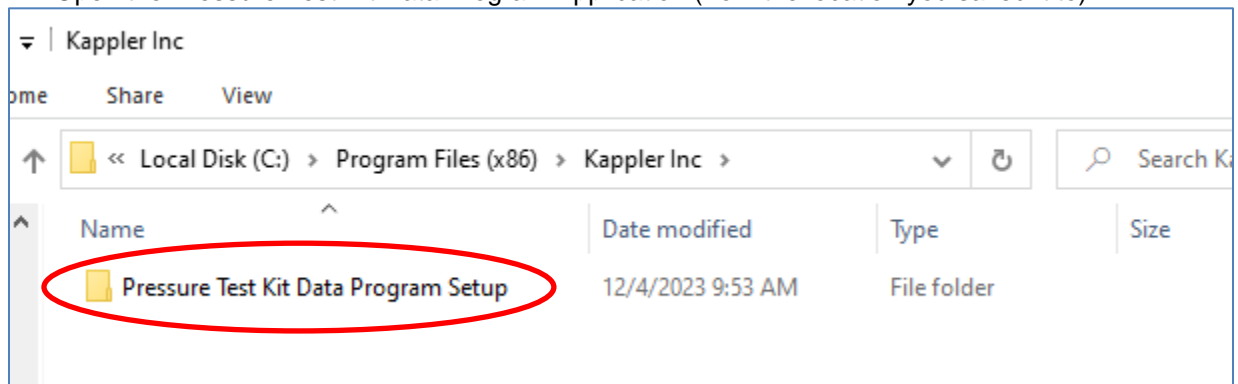
5. You may now close the installation window.



## TECHNICAL SERVICES DOCUMENT

### Using the Pressure Test Kit Data Program Application

1. Open the Pressure Test Kit Data Program Application (from the location you saved it to)

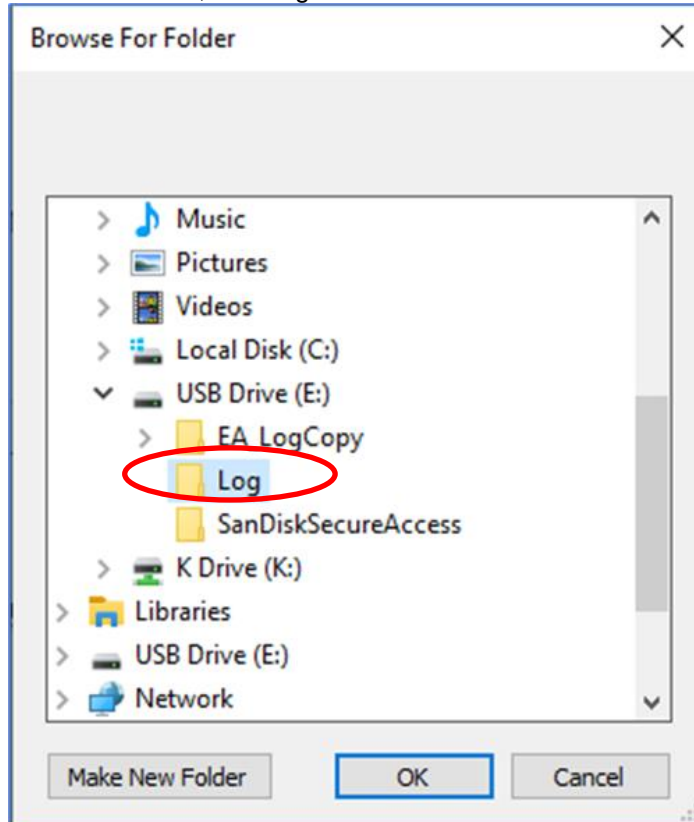


2. Open a test results by clicking *File, Open Test Result*



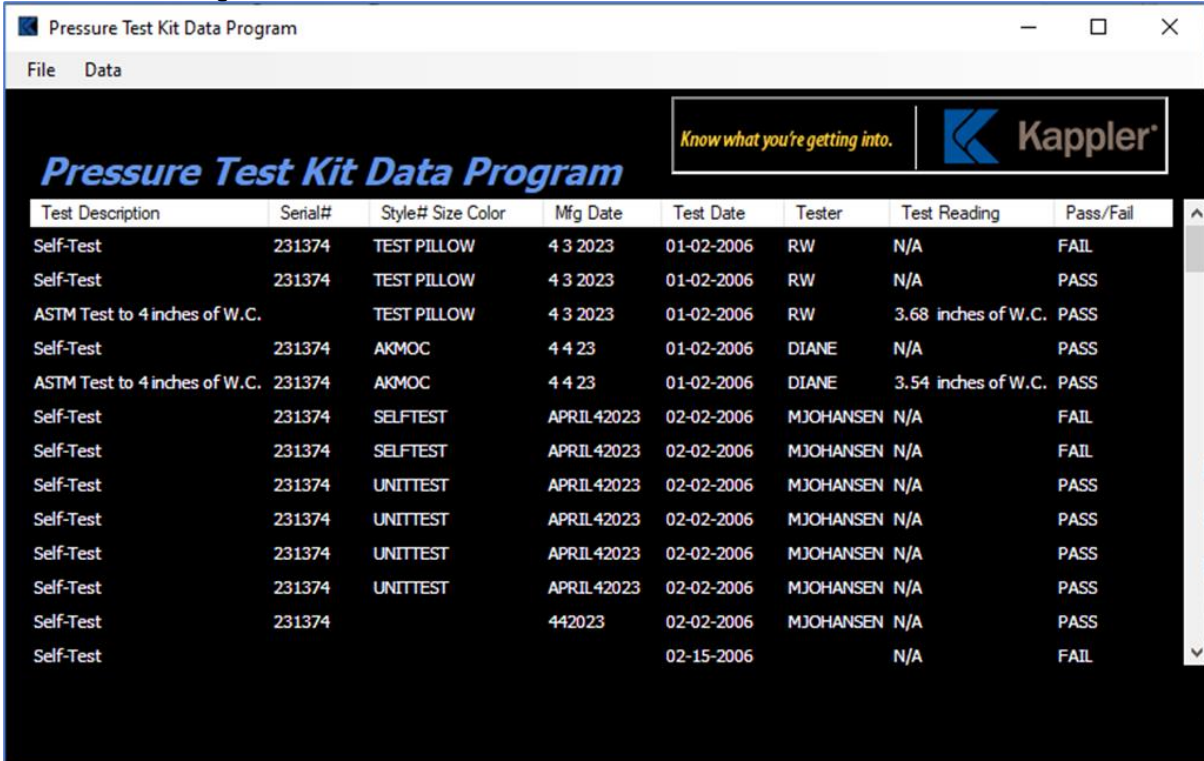
## TECHNICAL SERVICES DOCUMENT

3. Click Computer, your external drive, and Log folder



# TECHNICAL SERVICES DOCUMENT

4. When your test results display, you can click on any column header to sort the data in ascending or descending order

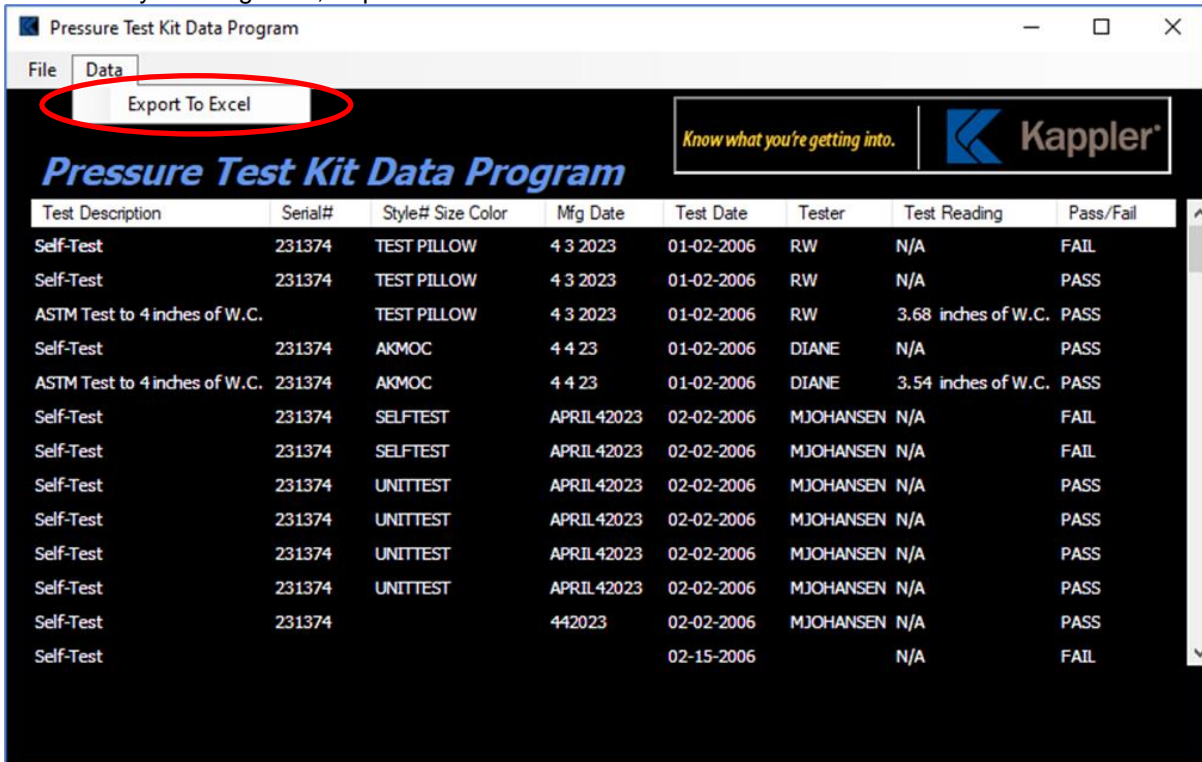


Test Description	Serial#	Style# Size Color	Mfg Date	Test Date	Tester	Test Reading	Pass/Fail
Self-Test	231374	TEST PILLOW	4 3 2023	01-02-2006	RW	N/A	FAIL
Self-Test	231374	TEST PILLOW	4 3 2023	01-02-2006	RW	N/A	PASS
ASTM Test to 4 inches of W.C.		TEST PILLOW	4 3 2023	01-02-2006	RW	3.68 inches of W.C.	PASS
Self-Test	231374	AKMOC	4 4 23	01-02-2006	DIANE	N/A	PASS
ASTM Test to 4 inches of W.C.	231374	AKMOC	4 4 23	01-02-2006	DIANE	3.54 inches of W.C.	PASS
Self-Test	231374	SELFTEST	APRIL 4 2023	02-02-2006	MJOHANSEN	N/A	FAIL
Self-Test	231374	SELFTEST	APRIL 4 2023	02-02-2006	MJOHANSEN	N/A	FAIL
Self-Test	231374	UNITTEST	APRIL 4 2023	02-02-2006	MJOHANSEN	N/A	PASS
Self-Test	231374	UNITTEST	APRIL 4 2023	02-02-2006	MJOHANSEN	N/A	PASS
Self-Test	231374	UNITTEST	APRIL 4 2023	02-02-2006	MJOHANSEN	N/A	PASS
Self-Test	231374	UNITTEST	APRIL 4 2023	02-02-2006	MJOHANSEN	N/A	PASS
Self-Test	231374		4 4 2023	02-02-2006	MJOHANSEN	N/A	PASS
Self-Test				02-15-2006		N/A	FAIL

# TECHNICAL SERVICES DOCUMENT

## Exporting Test Result Data

1. After opening a test result, displaying the result on screen, and sorting the results. Export the test result by Clicking Data, Export To Excel



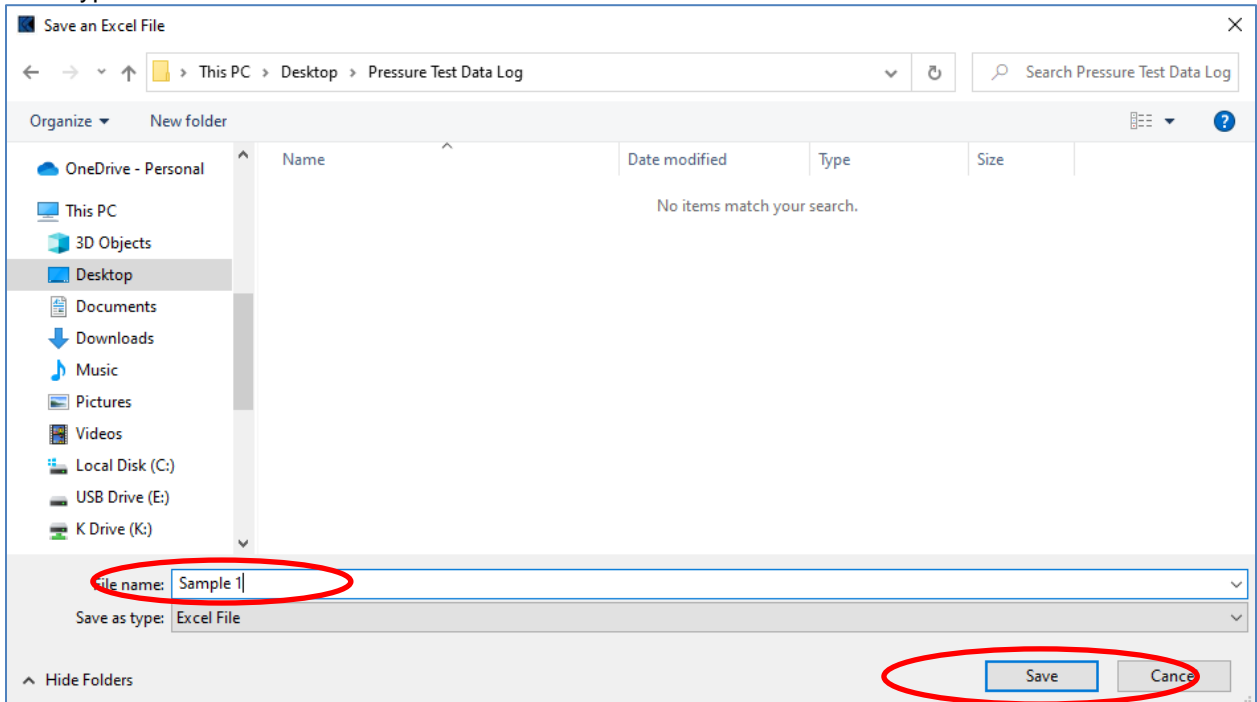
The screenshot shows the 'Pressure Test Kit Data Program' window. The 'Data' menu is open, and the 'Export To Excel' option is highlighted with a red circle. The window displays a table of test results.

Test Description	Serial#	Style# Size Color	Mfg Date	Test Date	Tester	Test Reading	Pass/Fail
Self-Test	231374	TEST PILLOW	4 3 2023	01-02-2006	RW	N/A	FAIL
Self-Test	231374	TEST PILLOW	4 3 2023	01-02-2006	RW	N/A	PASS
ASTM Test to 4 inches of W.C.		TEST PILLOW	4 3 2023	01-02-2006	RW	3.68 inches of W.C.	PASS
Self-Test	231374	AKMOC	4 4 23	01-02-2006	DIANE	N/A	PASS
ASTM Test to 4 inches of W.C.	231374	AKMOC	4 4 23	01-02-2006	DIANE	3.54 inches of W.C.	PASS
Self-Test	231374	SELFTEST	APRIL 4 2023	02-02-2006	MJOHANSEN	N/A	FAIL
Self-Test	231374	SELFTEST	APRIL 4 2023	02-02-2006	MJOHANSEN	N/A	FAIL
Self-Test	231374	UNITTEST	APRIL 4 2023	02-02-2006	MJOHANSEN	N/A	PASS
Self-Test	231374	UNITTEST	APRIL 4 2023	02-02-2006	MJOHANSEN	N/A	PASS
Self-Test	231374	UNITTEST	APRIL 4 2023	02-02-2006	MJOHANSEN	N/A	PASS
Self-Test	231374	UNITTEST	APRIL 4 2023	02-02-2006	MJOHANSEN	N/A	PASS
Self-Test	231374	UNITTEST	442023	02-02-2006	MJOHANSEN	N/A	PASS
Self-Test				02-15-2006		N/A	FAIL



## TECHNICAL SERVICES DOCUMENT

2. Type the filename to save the result as and Click Save.



3. Window will display location of saved file. Click OK.

